

Digital Undercounter Freezer Counter - 2 Door (R404A) Remote

ITEM # _____

MODEL # _____

NAME # _____

SIS # _____

AIA # _____


710443 (EJ2ERAA)

 2-door Freezer
Counter, -22-15°C, AISI 304,
remote

Short Form Specification

Item No. _____

AISI 304 stainless steel panels, AISI 430 bottom panel, galvanized back panel. Worktop thickness 50mm. N. 2 full doors. For connection to a remote refrigeration unit (not included). Automatic defrost. Operating temperature: -15-22°C. R404A gas in refrigeration circuit. Supplied with 1 grid for each door compartment

Main Features

- Anti-tilt runners accept GN 1/1 containers.
- Combination of doors and drawers to suit varying needs, with the possibility to change the configuration on site.
- Digital control panel.
- Forced air circulation for rapid cooling and an even temperature distribution.
- Refrigerated compartment designed to accept GN 1/1 containers.
- Self closing stainless steel doors (< 90°).
- Fully compliant HACCP digital control: when temperature exceeds critical limits, acoustic and visual alarms are activated. Up to two months of event are kept in memory.
- Prearranged to fit RS485 port to facilitate connection to a remote computer and integrated HACCP systems.
- 0mm clearance installation space: tower configuration cooling unit guarantee performance with frontal ventilation only; this unique solution allows installation against the wall or side by side with other appliances, even on the cooling unit side to maximize the use of kitchen space.
- Hot gas automatic evaporation of defrost water.
- Preservation performances and temperature uniformity within the cell guaranteed at 5-HEAVY DUTY (40°C) working conditions according to EN16825:2016 test protocol.
- Combination of doors and drawers to suit any configuration needed, with the possibility to change the configuration on site. Right cooling unit available on request.
- Frontal and easy access to all components in the cooling unit.
- Certified safety CE requirements.
- Small footprint to fit even in limited environments.
- Connectivity ready for real time access to connected appliances from remote and data monitoring (requires optional accessory).
- Easy serviceability thanks to the intuitive control panel with access via app.
- Integrated RS485 port to facilitate connection to a remote computer and integrated HACCP systems.
- Tropicalized unit.

Construction

- Access to all components from the front.
- Built-in compressor to suit operating conditions.
- Developed and produced in ISO 9001 and ISO 14001 certified factory.
- Fault code display.
- Interior base with rounded corners, pressed from a single sheet.
- Internal and external doors, front, back and side panels in AISI 304 Stainless steel.
- Mounted on Stainless steel adjustable legs to give 150 mm clearance for ease of cleaning.
- Rounded internal corners for ease of cleaning.

APPROVAL: _____

- Pre-arranged for drain-pipe.
- Built-in refrigeration unit.
- Mounted on stainless steel feet to give 150 mm (-5/+50 mm) clearance for ease of cleaning the floor.
- Ease of cleaning and high hygiene standards thanks to the rounded internal corners, the easily removable runners, grids and air conveyors.
- Internal structure with 15 charging positions (3 cm pitch) available to host GN 1/1 grids, ensuring higher net capacity and a greater storage space.
- Extractable cooling unit to facilitate maintenance.
- IP21 protection index.

Sustainability



- Removable triple-chamber balloon magnetic gasket to improve insulation and reduce energy consumption and ease of cleaning.
- Fitted with 90 mm thickness of cyclopentane insulation for best insulating performance (thermal conductivity: 0,020 W/m*K) and lowest environmental impact (GWP=3).

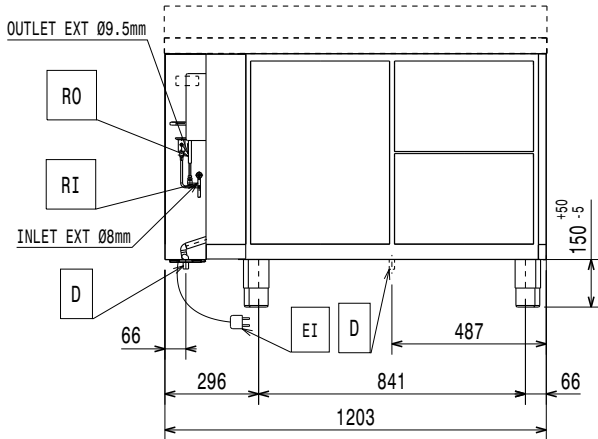
Included Accessories

- 2 of Kit 1/1 grey rilsan grid and 2 side runners for refrigerated counters PNC 881109

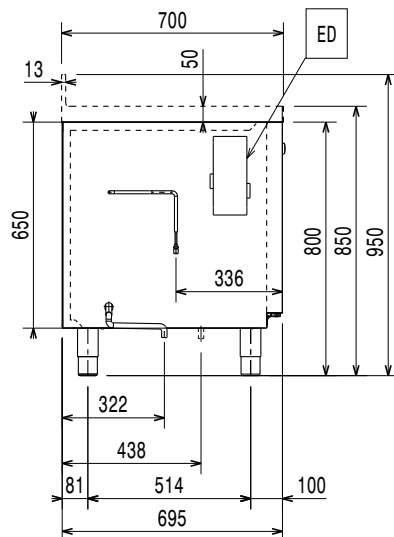
Optional Accessories

- | | | |
|--|------------|--------------------------|
| • Automatic defrost with waste evaporation | PNC 880028 | <input type="checkbox"/> |
| • 1/1GN grey rilsan grid for refrigerated counters | PNC 881107 | <input type="checkbox"/> |
| • 2 side runners for 1/1 GN ecostore refrigerated counters | PNC 881108 | <input type="checkbox"/> |
| • Kit 1/1 grey rilsan grid and 2 side runners for refrigerated counters | PNC 881109 | <input type="checkbox"/> |
| • 1/1 GN plastic container, H=65 mm | PNC 881110 | <input type="checkbox"/> |
| • 1/1 GN plastic container, H=100 mm | PNC 881111 | <input type="checkbox"/> |
| • Remote unit for 670lt cabinets and freezer counters - 2 and 3 compartments | PNC 881123 | <input type="checkbox"/> |
| • 2x½ drawer kit for refrigerated counters - h650mm | PNC 881176 | <input type="checkbox"/> |
| • Lock for refrigerator/freezer counters with 2 compartments - h650mm (can be used in kit for Marine conversion) | PNC 881245 | <input type="checkbox"/> |

Front

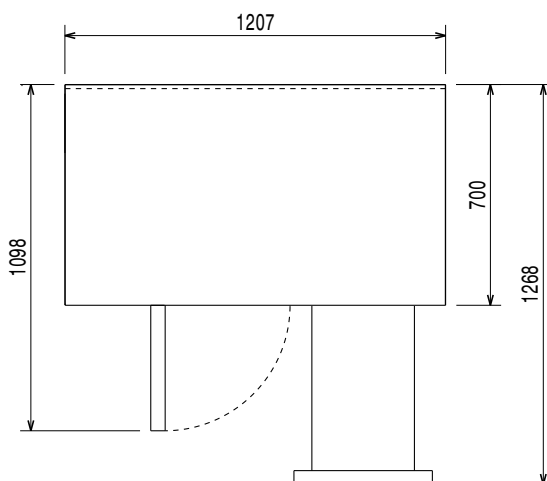


Side



EI = Electrical inlet (power)

Top



Electric

| | |
|------------------------|-------------------------|
| Supply voltage: | 220-240 V/1 ph/50/60 Hz |
| Electrical power, max: | 0.1 kW |

Key Information:

| | |
|------------------------------|---------------------|
| Net Volume: | 160 lt |
| N° of doors: | |
| External dimensions, Width: | 1208 mm |
| External dimensions, Depth: | 700 mm |
| External dimensions, Height: | 850 mm |
| Internal Dimensions, Width: | 798 mm |
| Internal Dimensions, Depth: | 560 mm |
| Internal Dimensions, Height: | 550 mm |
| Net weight: | 105 kg |
| Shipping volume: | 0.97 m ³ |
| Depth with doors open: | 1310 mm |
| Gross capacity: | 290 lt |

Refrigeration Data

| | |
|--|----------------------|
| Control type: | Digital |
| Min/Max internal humidity: | |
| Operating temperature min.: | -15 °C |
| Operating temperature max.: | -22 °C |
| Compressor power: | |
| Refrigeration type: | R404A; R452A |
| Operating mode: | Ventilated |
| Insulation: | 90 mm (Cyclopentane) |
| Suggested refrigeration power: | 674 W |
| Condition at evaporation temperature: | -30 °C |
| Condition at condensation temperature: | 55 °C |
| Condition at ambient temperature: | 32 °C |
| Connection pipes (remote) - outlet: | 9.5 mm |
| Connection pipes (remote) - inlet: | 8 mm |

ISO Certificates

| | |
|----------------|---|
| ISO Standards: | ISO 9001; ISO 14001; ISO 45001; ISO 50001 |
|----------------|---|

Sustainability

| | |
|--|-----|
| GWP Index: | |
| Refrigeration power: | 0 W |
| Refrigerant weight: | 0 g |
| Energy Class (EU Reg. 2015/1094): | |
| Yearly and daily energy consumption (EU Reg. 2015/1094): | |
| Climate class (EU Reg. 2015/1094): | |
| Energy Efficiency Index-EEI (EU Reg. 2015/1094): | |